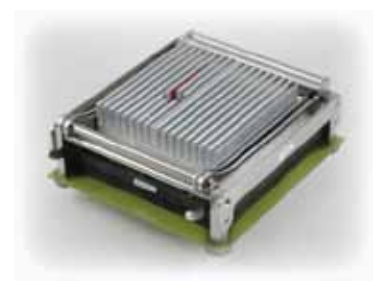
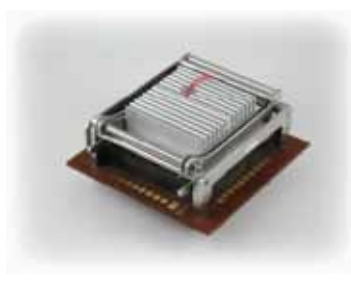
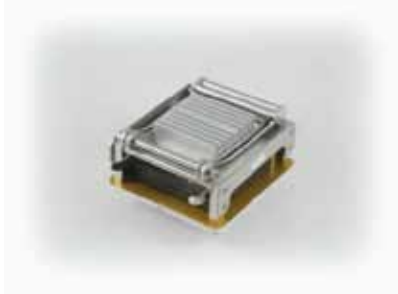


Get Control Over Your Burn-in Costs



| | ESJ50 | ESJ65 | ESJ80 | ESJ10 | ES1 | ES2 |
|-------------------------|-------|-------|-------|-------|-------|-------|
| Minimum Pitch (mm) | 0.50 | 0.65 | 0.80 | 1.00 | 1.00 | 1.00 |
| Mixed Pitch (mm) | ✓ | ✓ | ✓ | ✓ | ✓ | ✓ |
| LGA | X | X | X | ✓ | ✓ | ✓ |
| BGA | ✓ | ✓ | ✓ | ✓ | ✓ | ✓ |
| Min Package (mm) | 15X15 | 15X15 | 15X15 | 15X15 | 27X27 | 45X45 |
| Min Package (mm) | 31X31 | 31X31 | 31X31 | 31X31 | 45X45 | 60X60 |
| Max Array (pins) | 3,600 | 2,116 | 1,369 | 900 | 1,936 | 3,481 |
| Heat Sink (Heater &RTD) | ✓ | ✓ | ✓ | ✓ | ✓ | ✓ |

The Only High Performance BI Socket

| | ESJ50 | ESJ65 | ESJ80 | ESJ10 | ES1 | ES2 |
|--------------------------|---------|---------|---------|---------|---------|---------|
| Footprint (w)(mm) | 65.22 | 65.22 | 65.22 | 65.22 | 80.22 | 95.22 |
| Footprint (l)(mm) | 86.81 | 86.81 | 86.81 | 86.81 | 101.81 | 116.81 |
| Footprint (h)(mm) | 35.63 | 35.63 | 35.63 | 35.63 | 36.67 | 35.82 |
| H-Pin (LGA) | X | X | X | H077AL | H077AL | H077AL |
| H-Pin (BGA) | H038DL | H038DL | H057DL | H077GL | H077GL | H077GL |
| Contact Force | 26.3 | 26.3 | 26.7 | 34.9 | 34.9 | 34.9 |
| Contact Resistance (m Ω) | <35 | <35 | <30 | <16 | <16 | <16 |
| Self Inductance (nH) | 0.88 | 0.88 | 0.95 | 0.93 | 0.93 | 0.93 |
| Bandwidth (GHz @ -1dB) | 15.7 | 15.7 | 18 | 23.2 | 23.2 | 23.2 |
| Temperature (C) | 150+ | 150+ | 150+ | 150+ | 150+ | 150+ |
| Mechanical Life | 50,000+ | 50,000+ | 50,000+ | 50,000+ | 50,000+ | 50,000+ |

